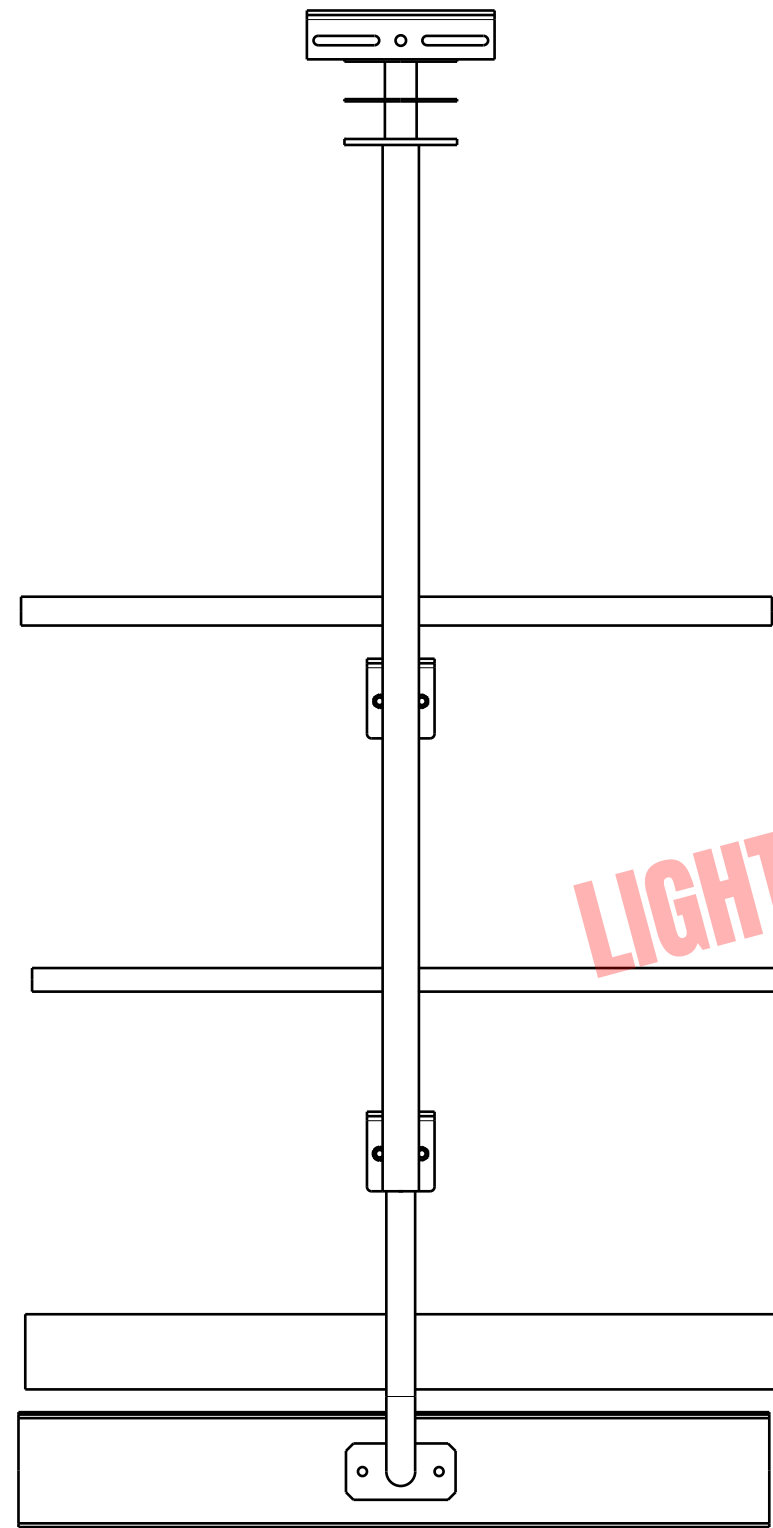
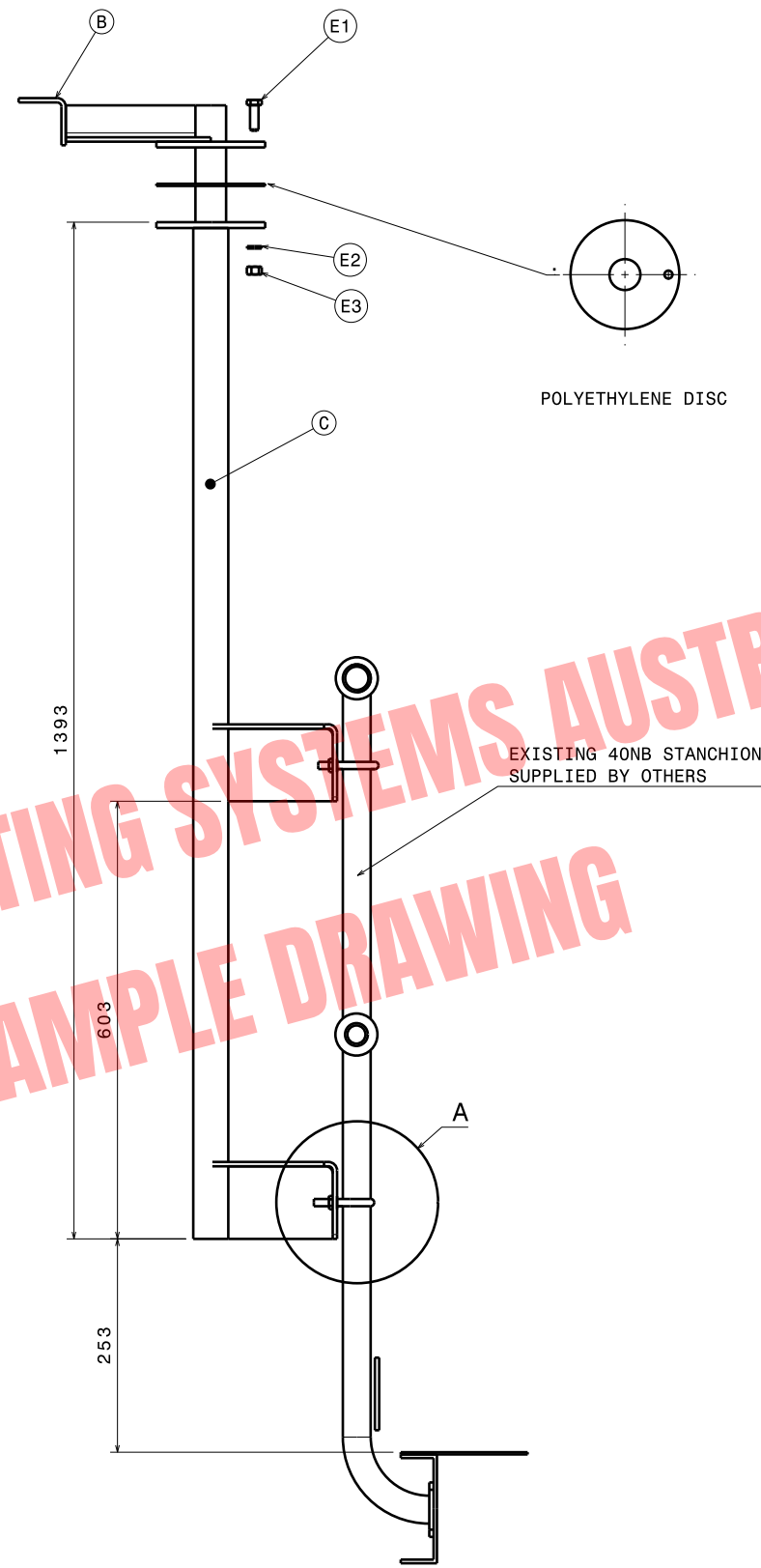


**NOTES:**

1. ALL DIMENSIONS ARE IN MILLIMETRES.
2. THE LIGHT POLE IS DESIGNED IN ACCORDANCE WITH WIND LOADING CODE AS1170.2 - 2011.
3. THE CLIENT SHALL PROVIDE A SUITABLE SUPPORT THAT IS STRUCTURALLY ADEQUATE FOR MOUNTING L.M.S. EQUIPMENT.
4. LUMINAIRE MAXIMUM MASS OF 15KG'S AND SIZE OF 400 x 400 x 400MM.
5. \*RECOMMENDED MAXIMUM INSTALLED EQUIPMENT WEIGHT REFERS TO RECOMMENDED LIMITS FOR EASE OF OPERATION, NOT THE ITEMS STRUCTURAL/ENGINEERED CAPACITY, AND INCLUDES AND EQUIPMENT AND ASSOCIATED MOUNTING BRACKET.



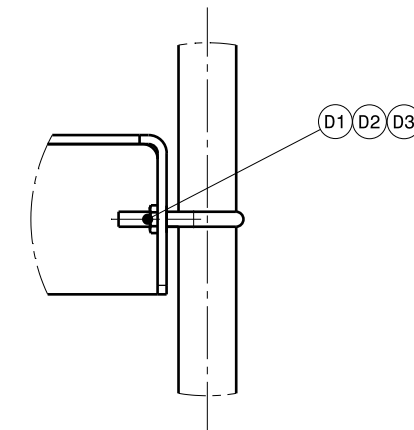
FRONT VIEW



SIDE VIEW

EXISTING 40NB STANCHION SUPPLIED BY OTHERS

POLYETHYLENE DISC



DETAIL A

LIGHT MOUNTING SYSTEMS AUSTRALIA  
SAMPLE DRAWING

PART	QTY	DESCRIPTION	MATERIAL
E3	1	M12 NYLOCK HEX NUT	
E2	2	M12 WASHER	
E1	1	M12 HEX SET SCREW	
D3	4	HEX NUT	
D2	4	WASHER	
D1	2	U-BOLT	
C	1	POST ASSEMBLY	
B	1	ARM ASSEMBLY	



This drawing cannot be reproduced or communicated without the written consent of the manufacturer.		LIGHT MOUNTING SYSTEMS AUSTRALIA P.O. BOX 73, LORN, N.S.W., 2320 P: 02 4932 9000 F: 02 4932 9009	
DRAWN BY D.R.	DATE 6/6/2012	DRAWING TITLE LMS-0075 - HANDRAIL FLOOD MOUNT SUITABLE FOR WIND LOAD REGIONS A, B, C & D.	
CHECKED BY M.L.	DATE 6/6/2012	SIZE A1	DRAWING NUMBER <b>LMS-075</b>
DESIGNED BY M.L.	DATE 6/6/2012	SCALE	VAR WEIGHT (kg) . SHEET 1/3