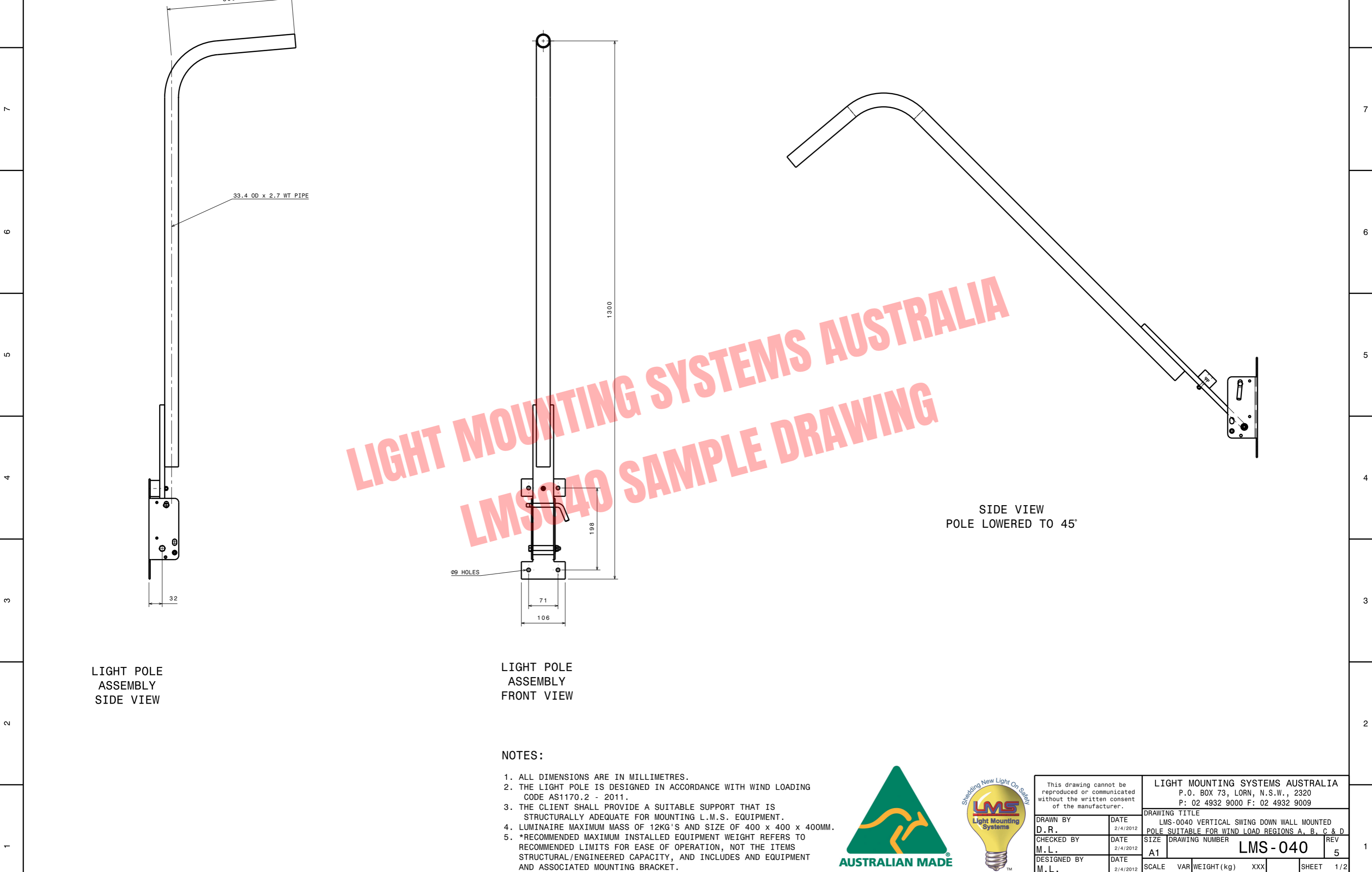


P O N M L K J I H G F E D C B A

8 7 6 5 4 3 2 1



LIGHT POLE ASSEMBLY SIDE VIEW

LIGHT POLE ASSEMBLY FRONT VIEW

SIDE VIEW POLE LOWERED TO 45°

NOTES:

1. ALL DIMENSIONS ARE IN MILLIMETRES.
2. THE LIGHT POLE IS DESIGNED IN ACCORDANCE WITH WIND LOADING CODE AS1170.2 - 2011.
3. THE CLIENT SHALL PROVIDE A SUITABLE SUPPORT THAT IS STRUCTURALLY ADEQUATE FOR MOUNTING L.M.S. EQUIPMENT.
4. LUMINAIRE MAXIMUM MASS OF 12KG'S AND SIZE OF 400 x 400 x 400MM.
5. *RECOMMENDED MAXIMUM INSTALLED EQUIPMENT WEIGHT REFERS TO RECOMMENDED LIMITS FOR EASE OF OPERATION, NOT THE ITEMS STRUCTURAL/ENGINEERED CAPACITY, AND INCLUDES AND EQUIPMENT AND ASSOCIATED MOUNTING BRACKET.



This drawing cannot be reproduced or communicated without the written consent of the manufacturer.		LIGHT MOUNTING SYSTEMS AUSTRALIA P.O. BOX 73, LORN, N.S.W., 2320 P: 02 4932 9000 F: 02 4932 9009	
DRAWN BY D.R.		DATE 2/4/2012	
CHECKED BY M.L.		DATE 2/4/2012	
DESIGNED BY M.L.		DATE 2/4/2012	
DRAWING TITLE LMS-0040 VERTICAL SWING DOWN WALL MOUNTED POLE SUITABLE FOR WIND LOAD REGIONS A, B, C & D		DRAWING NUMBER LMS-040	
SIZE A1		REV 5	
SCALE	VAR	WEIGHT(kg)	XXX
SHEET			1/2

P O N M L K J I H G F E D C B A