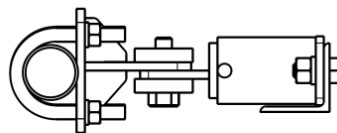


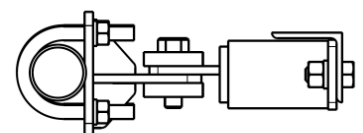
LMS112 - SWIVEL ATTACHMENT KIT

FEATURES & BENEFITS

- Convert suitable fixed pole or similar to pole that can be lowered for equipment maintenance
- Undo link point captive bolt to swivel pole via the lower pivot attachment point to the handrail for safe and easy access
- Link point design enables option to install pole to lower either left or right



THIS ORIENTATION ALLOWS
POLE TO LAY TO THE RIGHT.



THIS ORIENTATION ALLOWS
POLE TO LAY TO THE LEFT.

SPECIFICATIONS

Mount	Bolt to 65 x 65mm Angle Handrail Stanchion
Pole	Suitable 32NB pole (40NB Pole version available on request)
Available	HDG – Hot Dipped Galvanised 316 Stainless Steel



LIGHT MOUNTING SYSTEMS AUSTRALIA

Australian Made Lighting Poles & Accessories for accessible Lighting Installations & Maintenance

www.lightmountingsystems.com.au sales@lmsau.com 61 2 4932 9000